



Session Times and Prices – April 2026

£72 full day (Monday - Friday 08:00 - 17:00)

£35 half day (09:00-13:00 or 13:00-17:00)

£58 school hours (09:00 - 16:00)

These rates apply to all ages (from 6 months up to 5 years). Food is charged separately.

Extra hours may be booked, if not included in your chosen session, and are charged at: £9.10 per hour for the early hour (08:00 – 09:00); tea hour (16:00-17:00) and late hour (17:00-18:00).

Any ad-hoc hours, agreed by the Nursery Manager in advance, are charged at £10 per hour.

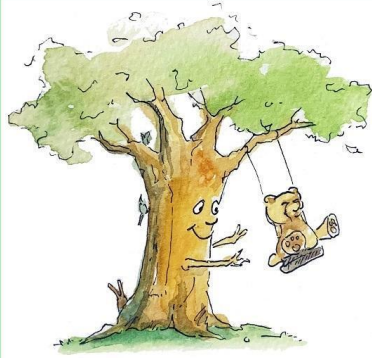
The nursery is closed for two weeks at Christmas and for two weeks at the end of August.

FREE PLACES

We provide 15 and 30 hour free places for all eligible children. Free hours may be used between 09:00-16:00 and can be used pro-rata across the year (48 weeks).

When using free hours your child must be in the setting within 15 minutes of their session time starting. We are not allowed to claim for funding if your child is routinely not in setting shortly after their booked session starts, and we may need to charge our hourly rate instead.

Where the number of free hours does not cover the number of hours booked, the hourly rate for the session booked will be applied. For full days this is £8.00 per hour between 08:00 and 17:00, for school days this is £8.29 per hour, and for half days this is £8.75 per hour between 09:00 and 16:00.



East Harptree Nursery

The Theatre, Middle Street, East Harptree, BS40 6AZ

Tel: 01761 220191
Mob: 07465 436635

Registered Charity No. 1029276



Additional voluntary charges on free hours

We charge a voluntary additional enrichment and consumables charge to cover resources and consumables provided over and above that which we must provide to deliver high quality childcare following our EYFS curriculum. Please refer to our voluntary charges on free hours policy for further information.

Babies: £7.00 per day / £4.20 per half day

Toddlers: £6.80 per day / £4.10 per half day

Preschool: £6.50 per day / £3.90 per half day

Families must provide confirmation that they wish to opt in to these charges by completing this form: <https://forms.office.com/r/Y7g3Dq1gJZ>

Food charge (applicable to all children)

The charges below cover the purchase and preparation costs for food.

£6.00 per day full day/school day - includes milk, two snacks, hot lunch

£4.50 per half day (morning) - includes milk, one snack, hot lunch

£1.20 per half day (afternoon) - includes milk, one snack

£2.00 (for children in setting after 4pm) - includes tea and pudding

Other charges (applicable to all children)

Forest School (preschool) is charged at £5 per session

Music sessions by an external provider charged at £2 per session

New starter administration fee

For children new to the setting an administration fee of £65 is charged to cover the cost of two settling in sessions, set up on Family, and other administration.